

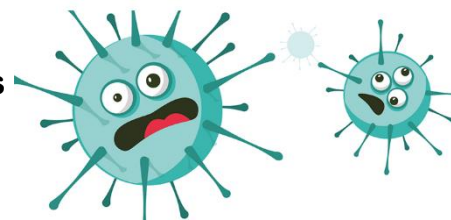
VACCINATION IN ITALY

ITALIANS VACCINATED



PHASE 1 JANUARY-MARCH

- Health and Social-Health Workers
- Long-term Care Patients
- Over 80's Population



5%



PHASE 2 APRIL-JUNE

- Over 60's Population
- Individuals with severe comorbidity, Immunodeficiency and/or fragilities
- Groups with high risk of serious ill or death
- Teachers and School Staff with high priorities



15%



PHASE 3 JULY-SEPTEMBER

- Individuals with medium comorbidity
- Remaining Teachers and School Staff
- Essential workers and high risk sectors
- Prisons and Communities

50%



PHASE 4 OCTOBER-DECEMBER

- Remaining Population



90%